

# Critical Worker Application Form for Continued Access to School Provision during Closure

The government has released new guidance which defines those occupations that are 'critical workers' during this crisis. It states that:

As a country, we all need to do what we can to reduce the spread of the COVID19 virus.

That is why the government has given clear guidance on [self-isolation](#), [household isolation](#) and [social distancing](#).

And the most recent scientific advice on how to further limit the spread of COVID19 is clear. **If children can stay safely at home, they should, to limit the chance of the virus spreading.**

That is why the government has asked parents to **keep their children at home, wherever possible, and asked schools to remain open only for those children who absolutely need to attend.**

It is important to underline that schools, colleges and other educational establishments remain safe places for children. But the **fewer children making the journey to school, and the fewer children in educational settings, the lower the risk that the virus can spread and infect vulnerable individuals in wider society.**

Schools are, therefore, being asked to continue to provide care for a limited number of children - children who are vulnerable and children whose parents are critical to the Covid-19 response and cannot be safely cared for at home.

Many parents working in these critical sectors may be able to ensure their child is kept at home. **Every child who can be safely cared for at home should be.**

This is an offer to parents and carers and there is **no requirement for parents and carers to send their children to school if they do not need or wish to do so.**

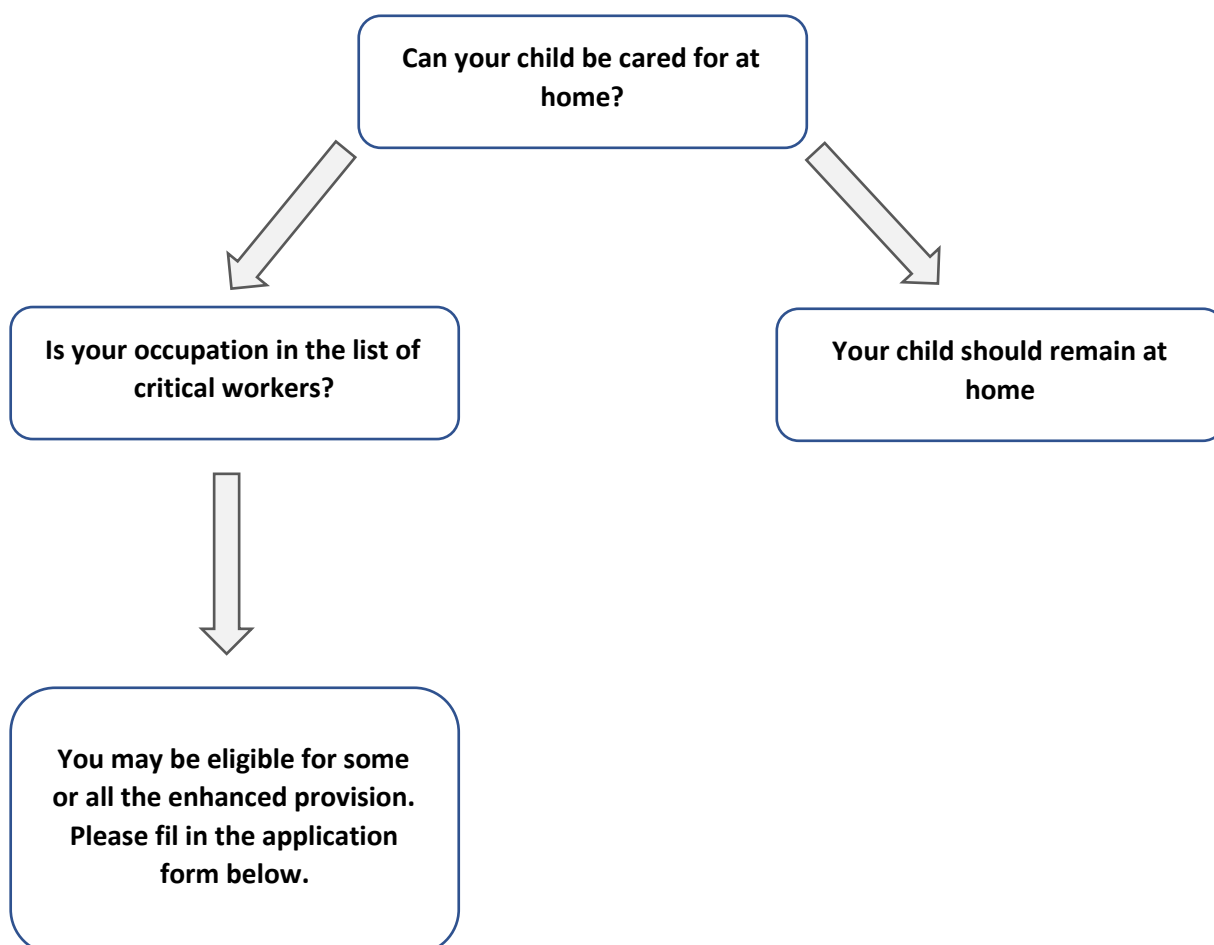
---

It is very important that this access is provided for critical workers.

As such, if you think that you are eligible for this access via your employment status, please follow the flowchart below. If you qualify and wish to access this offer, please fill in the questionnaire and return it to **the school office.**

**My occupation is listed below:**

- NHS staff
- Teachers and support staff
- Police and community support officers
- Prison officers and staff
- Probation officers and trainee probation officers
- LA officers and LA/NHS social workers
- Uniformed staff in fire and rescue service
- Armed forces personnel and some civilian MOD personnel (ie clinical staff, MOD police, uniformed fire and defense) and some discharge personnel
- Highway agency traffic staff
- LA environmental health officers / practitioners
- Care workers
- Food/supermarket drivers and other workers



### Woodland View Primary School Key worker application form

As we will have limited places we cannot guarantee emergency childcare places for all. We are offering places on a priority basis based on the following

1. Sole/both parents being a key worker
2. Highest priority key worker roles for families with one key worker

#### Parent 1

<u>Name</u>	
<u>Contact number</u>	
<u>Key worker role</u>	
<u>Employer</u>	
<u>Employer contact number</u>	

#### Parent 2

<u>Name</u>	
<u>Contact number</u>	
<u>Key worker role</u>	
<u>Employer</u>	
<u>Employer contact number</u>	

Days and times when childcare will be needed (childcare only available when you (and your partner if applicable) are on shift

<u>Monday</u>	<u>Tuesday</u>	<u>Wednesday</u>	<u>Thursday</u>	<u>Friday</u>

#### Children needing childcare

<u>Child name</u>	<u>Year group</u>

*We will be allocating childcare on a weekly basis so will need shift patterns weekly.*

*We will need proof of your job role and shift patterns.*

*We will be operating a further reduced service over the Easter holidays – more information to follow next week*

**We will no longer be open as a school. We are now an EMERGENCY CHILDCARE PROVIDER. Please do not use us for childcare if you have any other options. Closing schools is a social distancing measure and the more children we are in contact with, the greater the risk of spreading the virus. Please help us keep our staff safe and well so that we can continue providing this service as long as possible.**

Now please return this form to: [office@woodlandview.notts.sch.uk](mailto:office@woodlandview.notts.sch.uk)